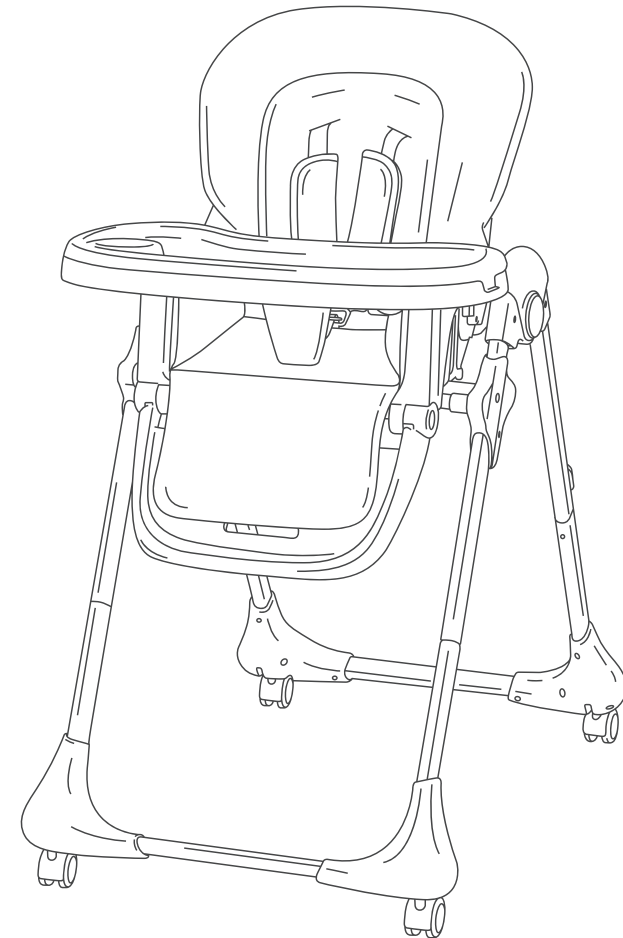


TRON

HIGHCHAIR
USER MANUAL



IMPORTANT

READ CAEFULLY AND KEEP FPR FUTURE REFERENCE

Safety: Take Note

Thank you for choosing a product. This highchair is carefully designed for a baby's safety and features a large tray with cupholder and a wipe clean seat with five point harness. The highchair also folds compactly for storage. Suitable for children who are able to sit up unaided (approximately 6-9 months up to 36 months.) or a maximum weight of 15 kg. To ensure safe, trouble free use, please take a little time to read the important safety notes below and the following instructions.

- Warning: Do not use the highchair until the child can sit up unaided
- Warning: Do not use the highchair unless all components are correctly fitted and adjusted.
- Warning: Never leave your child unattended, even for the shortest time.
- Warning: Always use the restraint system. Falling hazard: Prevent your child from climbing on the product.
- Warning: Be aware of the risk of open fires and other sources of strong heat in the vicinity of the product
- Ensure all users are familiar with the product's operation. It should always open and fold easily. If it does not, do not force the mechanism - stop and read the instructions.
- Only use on a flat stable surface.
- Ensure your highchair is fully erected before placing your child inside.
- Ensure children are clear of all moving parts before making any adjustments. Do not move the highchair with your child inside.
- Do not allow your child to climb unassisted into, play with or hang onto your highchair. This is not a toy.
- All additional hazards such as electrical fire flex should be kept out of reach of the child in the highchair.
- Warning: Be aware of the risk of tilting when your child can push its feet against a table or any other structure.
- Warning: Do not use the product if any part is broken, torn or missing.
- Warning: Keep children away when unfolding and folding the product to avoid injury.
- Warning: Always apply the parking device when it is not being moved.

Care & Maintenance

- Ensure all locking devices work correctly & regularly check the locks & fittings for security
- Regularly check all parts for wear & tear.
- DO NOT use spray lubricants, simply wipe clean after use.

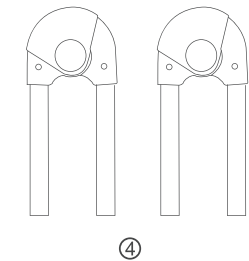
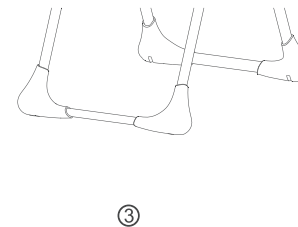
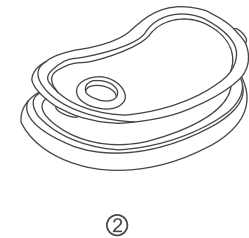
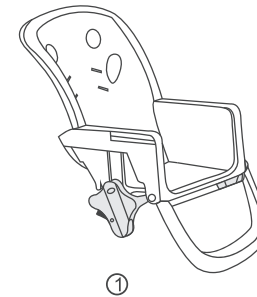
Introduction

The multi-position height adjustment of the highchair means that it is suitable for use from breakfast bar to coffee table and its recline seat allows baby to relax. It is free standing when folded for your convenience. The large wipe clean tray can be quickly adjusted or removed. The luxurious padded cover is easily removable for cleaning. We hope that you enjoy using the highchair.

1 Parts list.

Please retain all packaging until you are certain no parts are missing. After assembly, please dispose of all packaging carefully

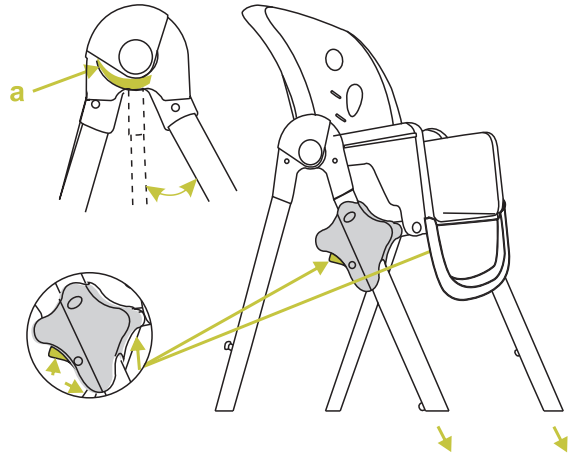
1. Seat Unit
2. Two part serving tray
3. Front and Rear feet
4. Left and Right legs
Seat cover



2 Assembly

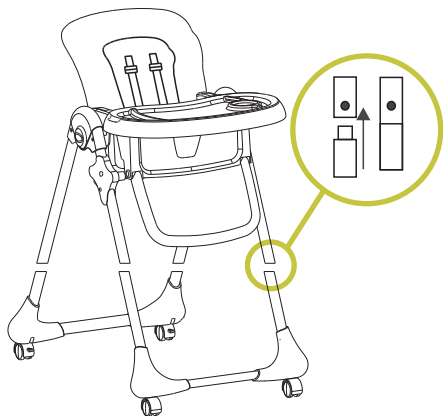
Take either the left or right leg (4), press and hold down the red button (a) and extend the leg then release the red button.

Take the other leg and follow the above procedure. Take the legs and noting the orientation in the diagram insert the legs into the top of the seat unit adjusting brackets. To lift the seat unit to the top of the legs simply press and hold the red buttons on the seat unit adjustment brackets and lift. There are seven positions to adjust height.



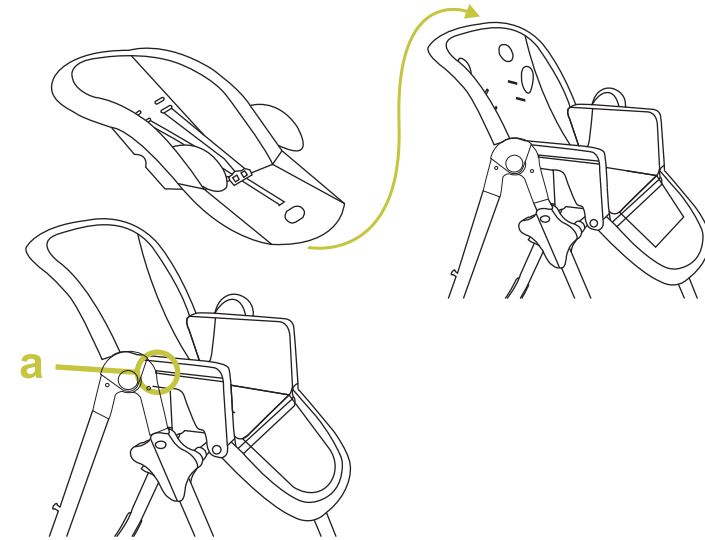
3 Fixing the feet

Turn the highchair upside down. Please note that each of the four legs has a sprung loaded pin. Line up one of the feet so that the small hole in the top of the foot lines up with the pin. Push firmly on the foot at either end until each of the two sprung pins click into place within the small hole in the foot. Repeat for other foot.



4 Fitting the seat cover

Slide the pocket of the seat cover back over the curved back frame. Secure the seat sides by wrapping them around the frame and fastening press studs (a) at each side of the seat.



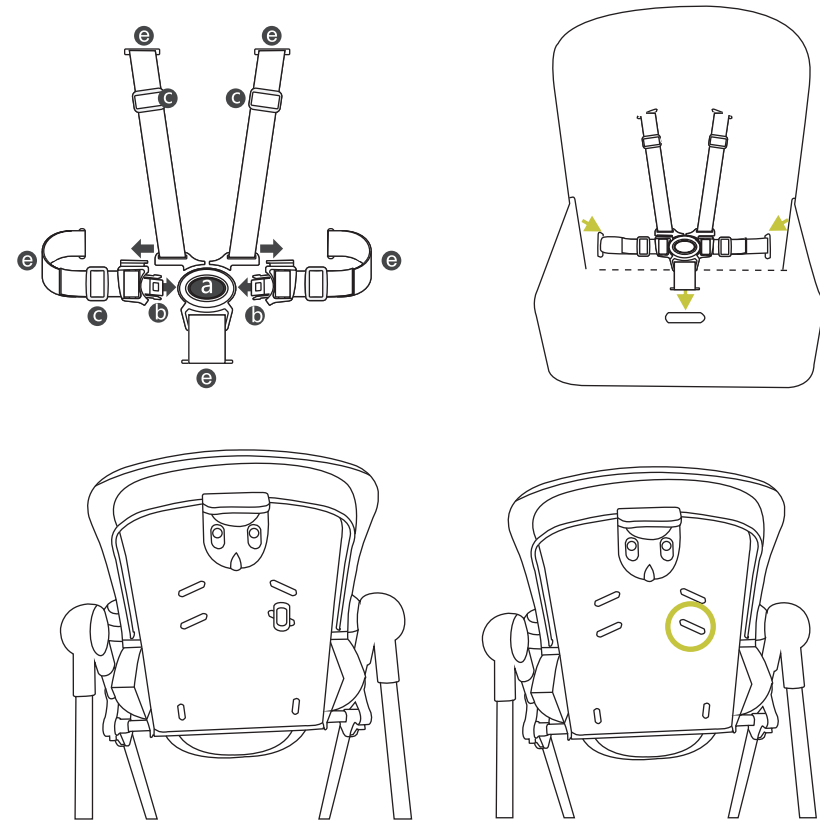
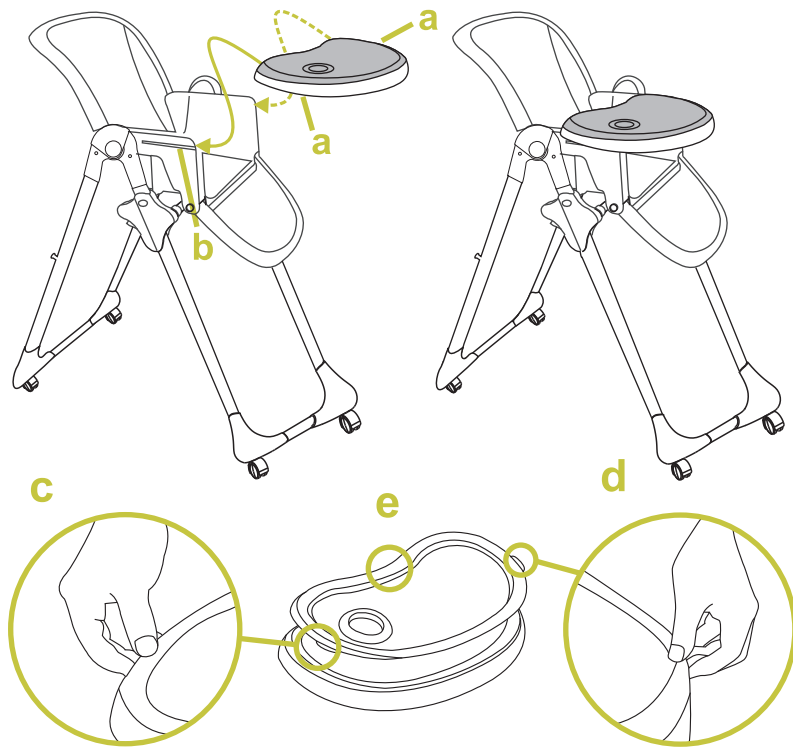
5 Fitting the tray

Position the tray to the front of the arms, full the front lever (a) found on the underside of the tray, whilst sliding the tray along with the slot (b) to the position required. The tray has three positions only as indicated on the arm rests, line the tray with the desired position, release the levers to lock position. In the case the tray is not automatically locked onto the armrests, move the tray slightly until a double click is heard signalling the tray is securely locked.

Warning!!

Never leave the tray fitted in a position in which the warning signs are visible.

The top tray can be removed by pulling at the ridge (c) (d). position the top tray over the bottom tray and push down to secure. The tray maybe stored on the back legs of the highchair. Align the holes in the rear of the tray with the small pegs on the back legs.



6 Harness

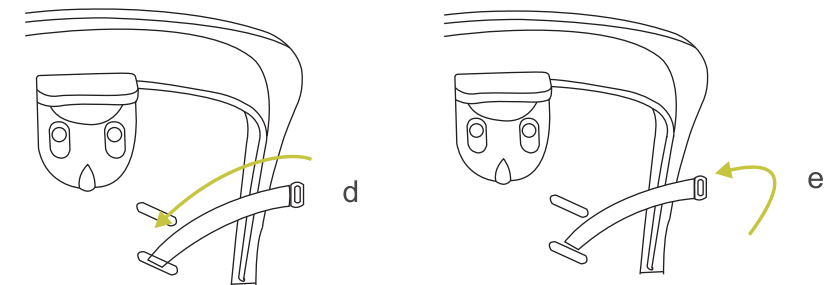
A five-point safety harness is provided to restrain your child and should always be worn.

To unfasten push the button on the buckle (a) and pull the clips clear.

To fasten the harness push the waist strap clips into the buckle until they lock in place (b).

Sliding adjusters are fitted on the shoulder straps and waist straps (c). The harness should be carefully adjusted so that it fits your child comfortably.

To adjust the shoulder strap height or to remove the harness, flatten the ring(e) ends and pass it through the slots in the seat(d). To refit the straps, flatten the ring (e) ends, pass it through the slots in the seat then open the ring (e) ends out.

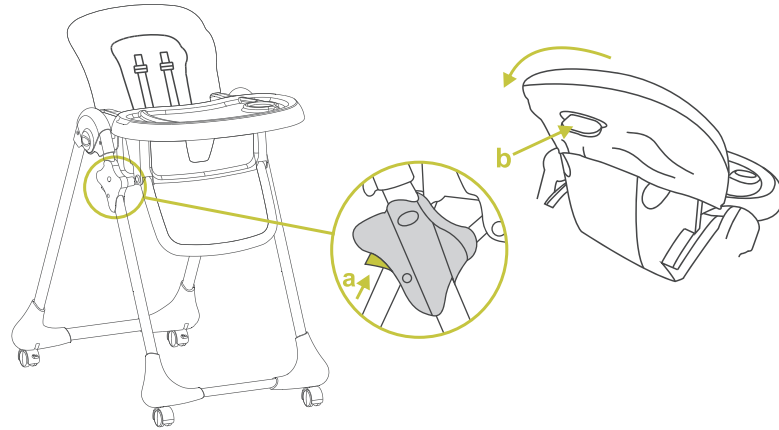


7 Adjusting the seat height and recline

Note: Do not adjust the height of the seat whilst the child is seated in the chair. To adjust the height of the seat push in both of the height adjusting locks (A) and simultaneously raise or lower the seat, releasing both of the locks at the required height. To adjust the angle of the seat, lift the plastic lever (b)(found on the back of the seat unit) and position as required, releasing the mechanism to secure into place.

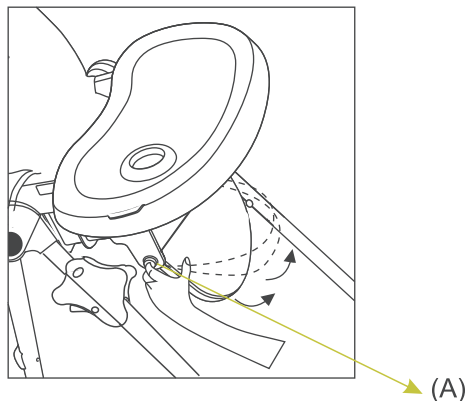
Important!!

If the height adjustment becomes difficult after a period of use and as part of the regular maintenance routine, DO NOT use spray lubricants, simply wipe clean after use.



8. Adjusting the footrest

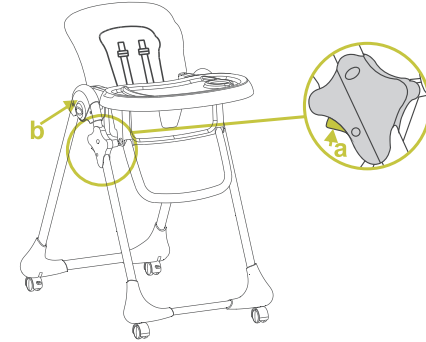
To adjust the footrest, push in both sides of button(A) and simultaneously raise or lower the footrest, releasing both buttons at the required position.



9 Fold the highchair

For a more compact fold to fit the tray to the back of the highchair. To fold push in both of the height adjusting locks (a) and simultaneously lower the seat of the highchair to position 7, press in both of the release catches (b) on the side legs and slide the rear legs forward.

Check the highchair is correctly folded in its locked position before leaving to stand free.



Cleaning

The highchair can be cleaned by sponging with warm soapy water and a mild detergent. A mild disinfectant may be used if desired. Subborn marks may be removed with a non abrasive cream cleaner. Never clean with abrasive, ammonia based, bleach based or spirit type cleaners.

Replacement parts

The replacement parts listed below are available for your product. In the event that you require any of these parts, please contact us at:

✉ E-mail: sales@quintonbaby.com.my

- Rear foot
- Harness
- Top tray
- Footrest
- Bottom tray
- Front foot
- Padded seat cover

Features

1. Two hand adjustable tray with 3 positions that suitable for different stage of baby's growth

2. 2 removable, washable trays with cupholder

3. 3 positions seat recline for baby relax and snoozing

4. 5 points safety harness make sure baby's safety

5. Adjustable footrest

6. 7 positions height adjustable for seat unit, so easy to feed your baby

7. Free standing after folding the highchair

8. Removable seat cover for easy cleaning

9. Suitable from six months

10. Passed EN 14988 :2017 standard
