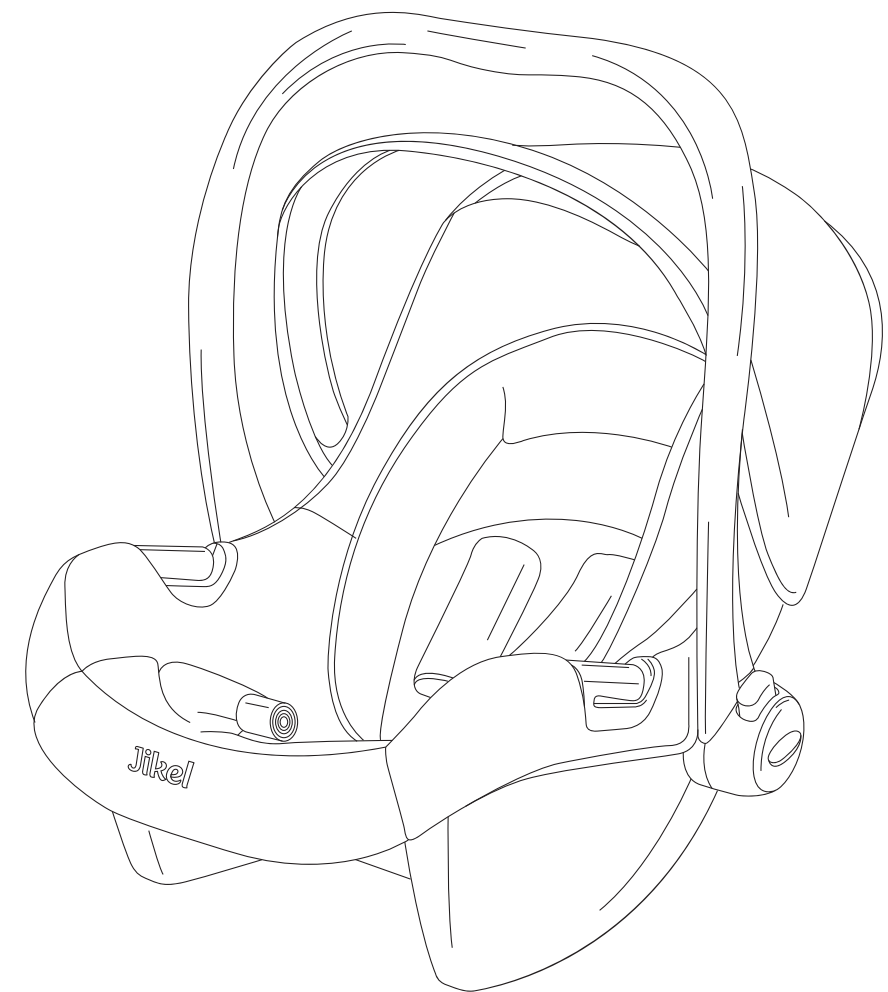




Rixa

Car Seat

USER MANUAL



IMPORTANT

READ CAEFULLY AND KEEP FPR FUTURE REFERENCE

CATALOG

Catalog	2
Caution and recommendations for use	3
Using the pushchair	3
Using as cradle	3
Get to know your car seat	4
Adjusting the handle	5
Securing your baby	6
The Y-belt height adjusting	7
Using in the car with standard seat belts	7
Installation	8
Care of your child seat	9

NOTICE

This is a "Universal" child restraint. It is approved to Regulation ECE R16 series of amendments for general use in vehicles and it will fit most but not all car seats.

A correct fit is likely if the vehicle manufacturer has declared in the vehicle handbook that the vehicle is capable of accepting a "Universal" child restraint for this age group.

This child restraint has been classified as "Universal" under more stringent conditions than those which applied to earlier designs which do not carry this notice.

Only suitable if the approved vehicles are fitted with 3 point safety belts with retractor , approved to ECE R16 or other equivalent standards.

If in doubt, consult either the child restraint manufacturer or the retailer

The product should be assembled by adult

CAUTION AND RECOMMENDATIONS FOR USE IN THE CAR

Please read all instructions before use and keep them for future reference. Complies with safety standards.

Can only be installed in designated vehicles equipped with three-point safety belts that comply with EEC n°16 or equivalent standards.

Never use a child safety seat:

- that is not adapted to the child's weight and size
- for any other use than manufacturer's recommendation (follow manufacturer's instructions for installation)
- that has been in an accident: seat must be replaced because it might have hidden damage

Always attach your child in a safety seat, even for short trips.

Warning! Never leave your child unattended. During trips, be sure that your child remains safely secured.

Belts must remain taut, never twisted. Always use and adjust the Y-belt. Make sure that baggage and other objects are correctly stored to avoid harm in case of accident or sudden braking.

It is recommended to use the seat with its seat cover and to replace it manufacturer recommended cover only.

The seat should be installed in such a way that no parts (rigid and plastic) can be caught in the vehicle's door or under a seat during normal vehicle use.

The seat's safety can only be guaranteed if installed and used according to manufacturer's instructions: any changes in use, installation or accessories will jeopardize the seat's safety.

The booster seat is designed for children weighing 0 to 13 kg in all vehicles with 3-point belts conform to current European standards. It must be installed facing backwards.

EXTREMELY DANGEROUS. Never use on a passenger seat fitted with airbags.

USING WITH THE PUSHCHAIR

The seat must be securely attached to the pushchair for maximum protection.

Always use the Y-belt.

USING AS CRADLE

IMPORTANT! : KEEP FOR FUTURE REFERENCE

Warning! Never leave the child unattended

Do not use the seat once the child can sit unaided.



This seat is not intended for prolonged periods of sleeping.

It is dangerous to use this seat on an elevated surface, e.g. a table.

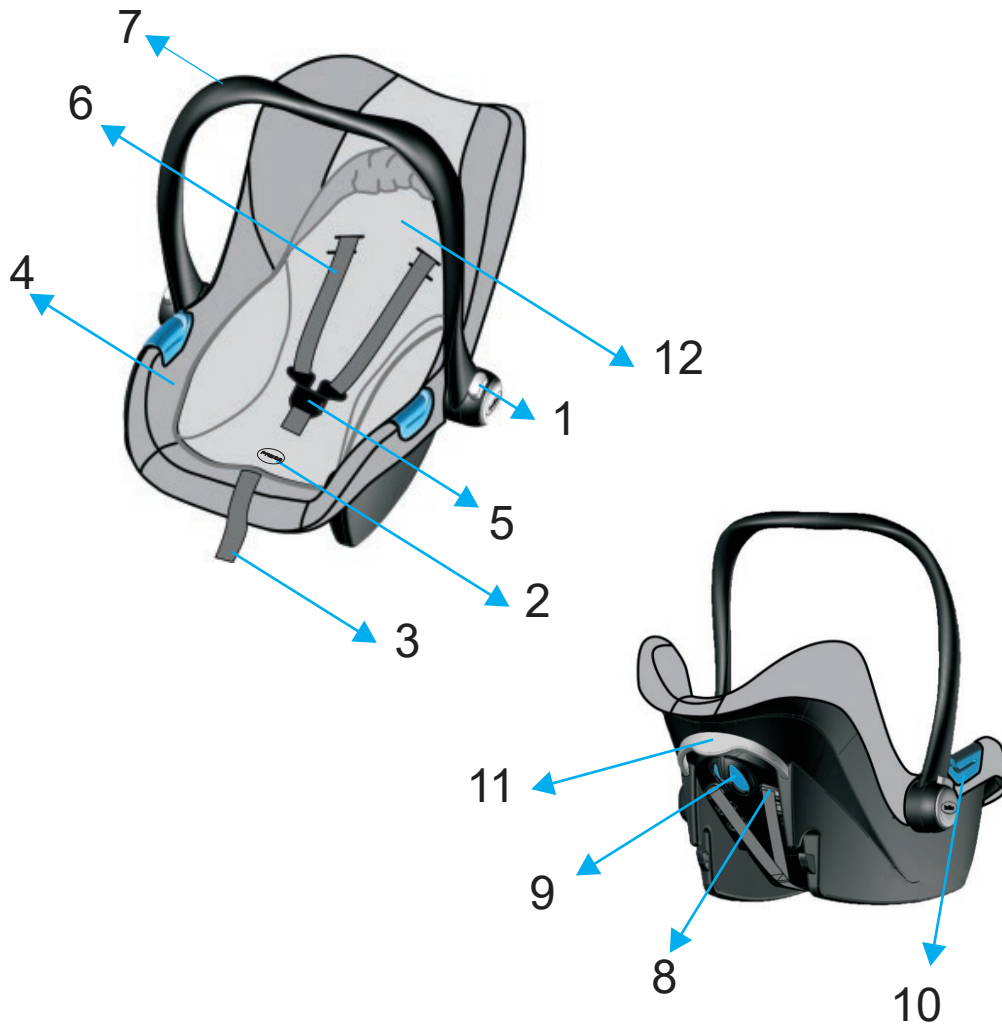
Always use the restraint system (harness).

This seat does not replace a cot or a bed. Should your child need to sleep, then it should be placed in a suitable cot or bed.

Do not use the seat if any components are broken or missing.

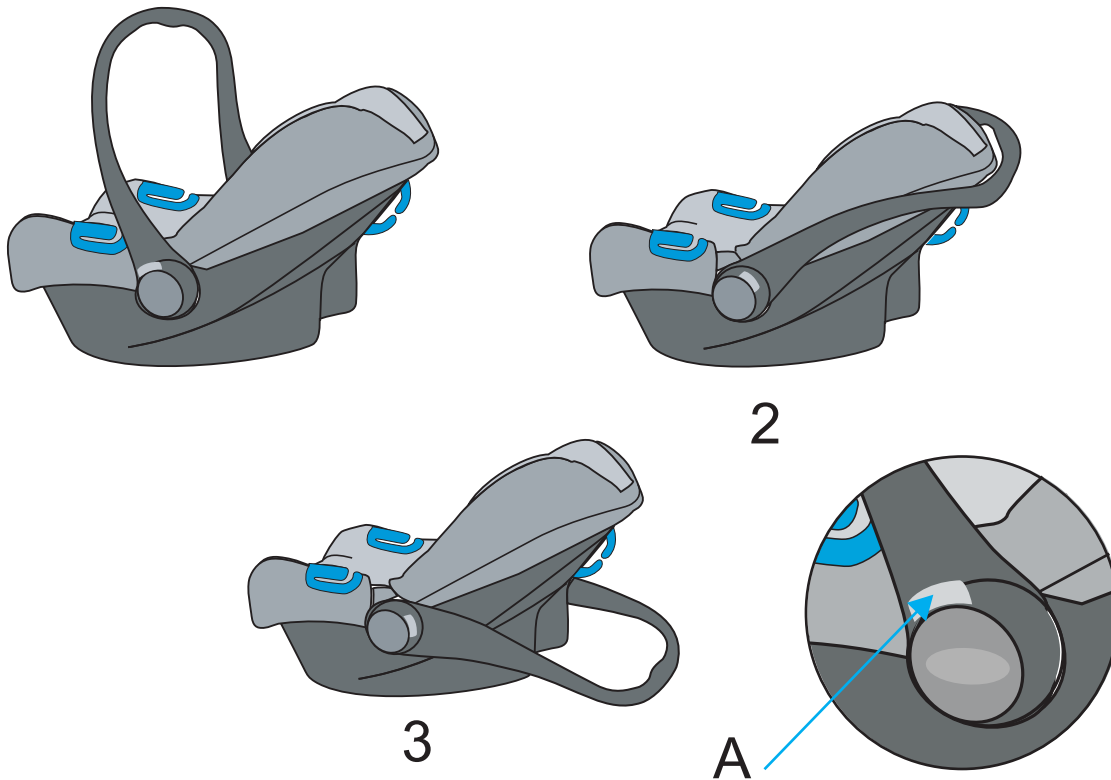
Do not use accessories or replacement parts other than those approved by the manufacturer.

GET TO KNOW YOUR CHILD SEAT



- 1 Grey button for adjusting the handle
- 2 Y-belt adjuster (under the «PRESS» word)
- 3 Y-belt adjuster strap
- 4 Cover
- 5 Y-belt buckle
- 6 Shoulder straps
- 7 Carry handle
- 8 Shoulder Y-belt slots
- 9 Diagonal belt guide (near the blue sticker in the back)
- 10 Lap belt blue guide
- 11 Device to unlock the seat on the stroller
- 12 Cushion

ADJUSTING THE HANDLE



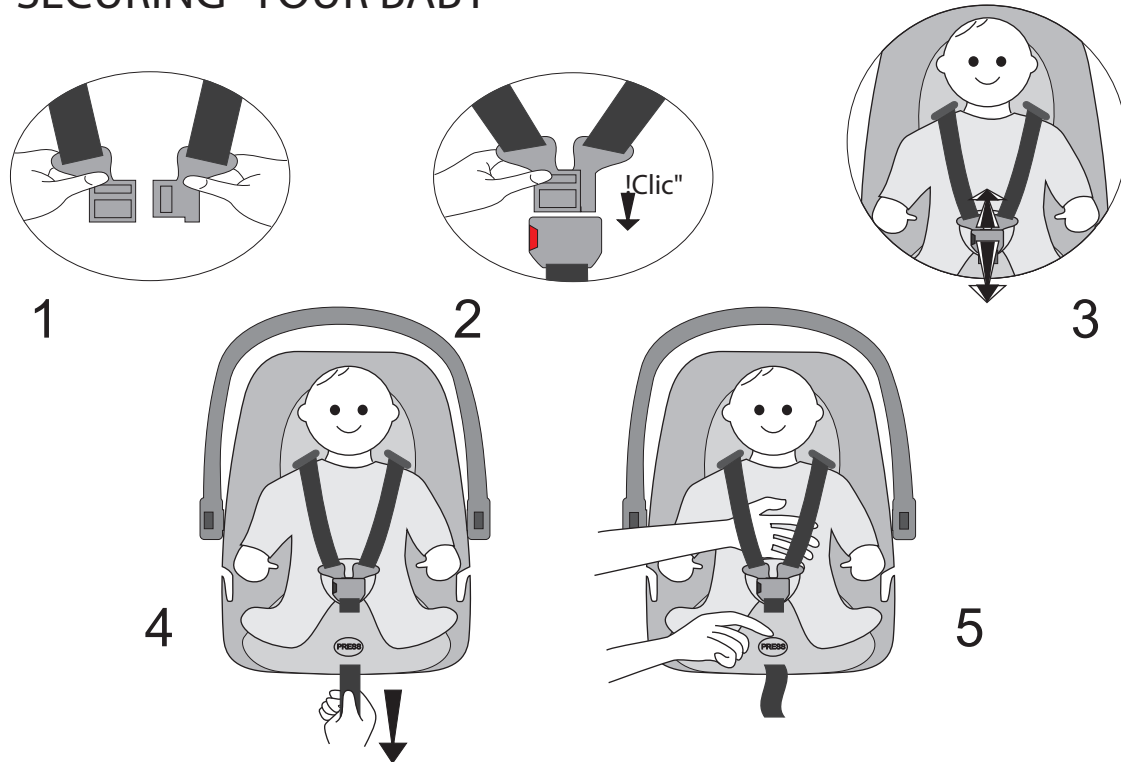
To adjust the handle from one position to another, press the grey buttons(A) on both sides of the handle; rotate the handle forwards or backwards into the desired position.

The carry handle has three positions :

1. Vertical for carrying
2. Against the car seat for rocking
3. All the way down to cancel the rocking movement and to support baby for feeding and play.

Always ensure that the handle is locked in position and that the Y-belt is correctly fitted and the buckle fastened before lifting your child seat.

SECURING YOUR BABY



FASTENING THE Y-BELT

Step A. Assemble the two plastic sections of the buckle connectors together(diagram1)

Step B. Secure the two fastenings in the slot at the top of the buckle until they click into place(diagram2)

Step C. Always check that the Y-belt is correctly locked by pulling above and below the buckle(diagram3)

Step D. The Y-belt must be adjusted as tightly as possible without causing discomfort to the child. A loose Y-belt is dangerous and must be checked each time that you use the seat. To tighten the Y-belt ,pull down on the adjustment strap until the Y-belt at the correct tightness(diagram4).

LOOSENING THE SHOULDER Y-belt

The Y-belt loosened by pulling on both shoulder straps, at the same time press down on the Y-belt adjuster that is located on the shell underneath the "PRESS" word stitched on the cover (fig.5).

THE Y-BELT HEIGHT ADJUSTING



NO Too low



NO Too high



YES Correct

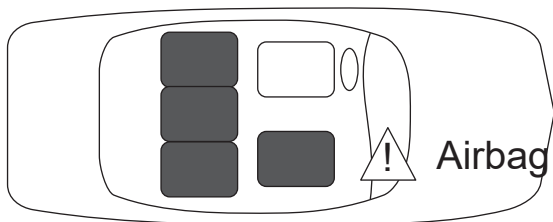
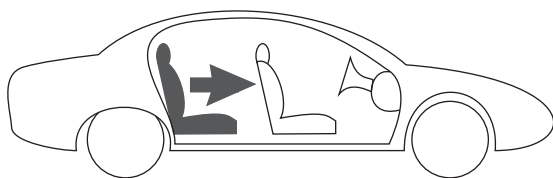
Adjusting the shoulder height

The Y-belt has 2 positions. The straps must stay higher than the shoulders and go into the nearest slots at the height of the child's shoulders.

To adjust the Y-belt, remove each strap by passing it through the slots from the back to the front of the seat; re-route the straps

USING IN THE CAR WITH STANDARD SEAT BELTS

CAUTION: never use on front passenger seats fitted with airbags, unless the airbag has been deactivated

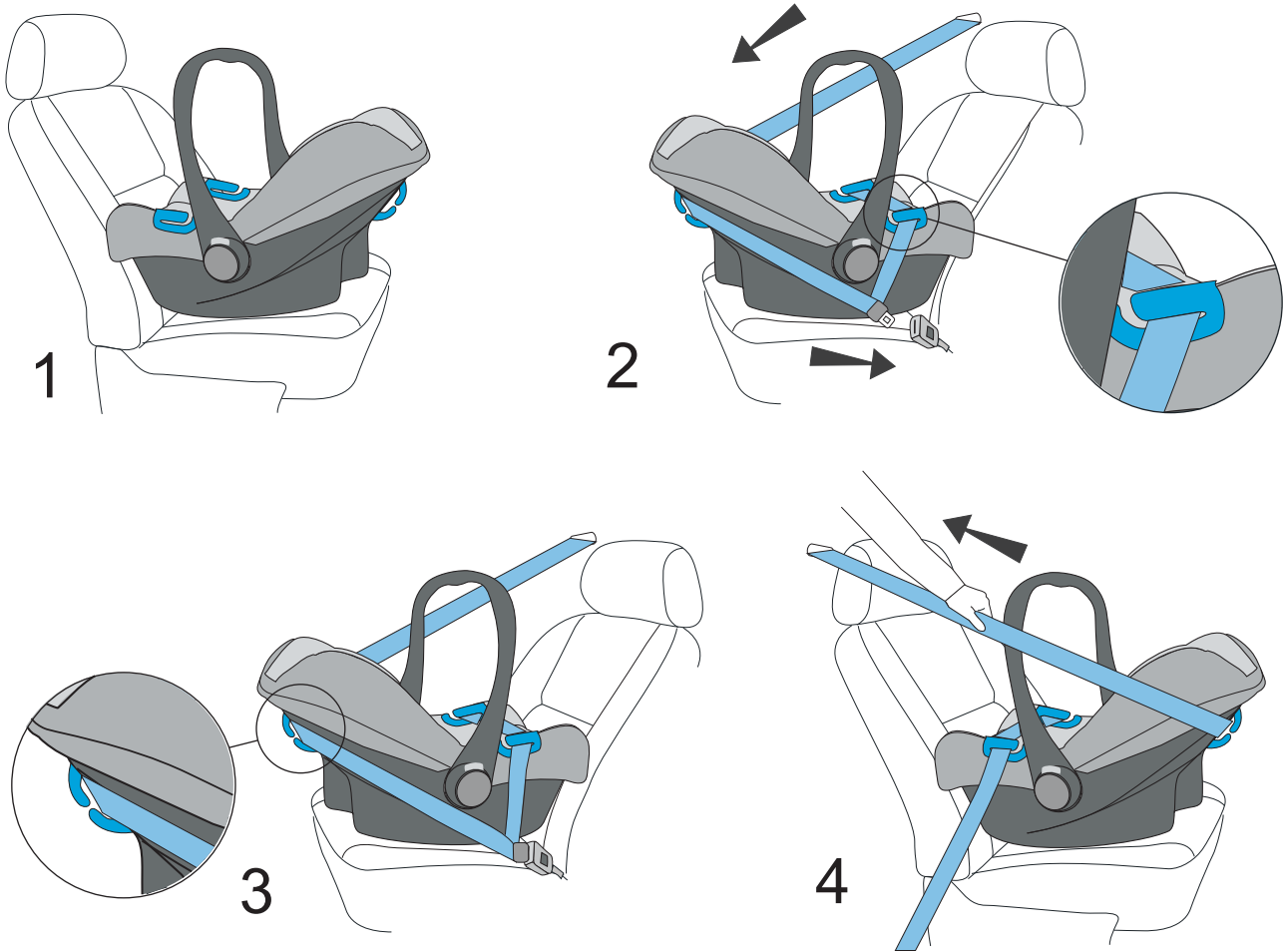


Please read carefully

"Caution and recommendations for use"

Only suitable if the approved vehicles are fitted with 3 point static or with retractor safety belts. Do not place the child seat in a rear facing vehicle seat or in a side-facing vehicle seat.

INSTALLATION



Step 1. Push the child seat facing rearward firmly against the backrest of the car seat.

Step 2. Route the lap section of the adult safety belt through the lap belt blue guide at the front of the child seat and fasten the car seat belt.

Step 3. Place the diagonal belt in the diagonal seat belt guide at the back of the seat.

Step 4. Take out all the slack in the seat belt, ensuring that there are not wrinkles or kinks in the seat belt.

CARE OF YOUR CHILD SEAT

REMOVING THE COVER

Dismantle the Y-belt .

Unfasten the buckle and pass the bottom of it through the cover.

Pass the top right and left parts of the buckle through the openings of the cover.

The cover is now released from the harness and can be removed from the shell for cleaning.

Hand wash fabric parts with a sponge and soapy water.

CLEANING THE SEAT

The Y-belt and plastic parts can be sponged with very mild detergent and warm water. Do not use chemical cleansers, bleach or corrosives on any part of the seat.