

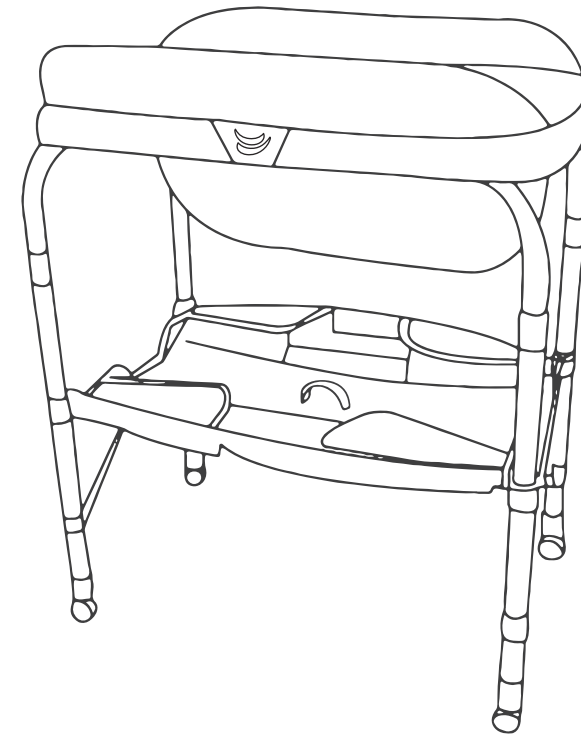


FRANCE DESIGNED

Ripple

Bath & Changing Table

USER MANUAL



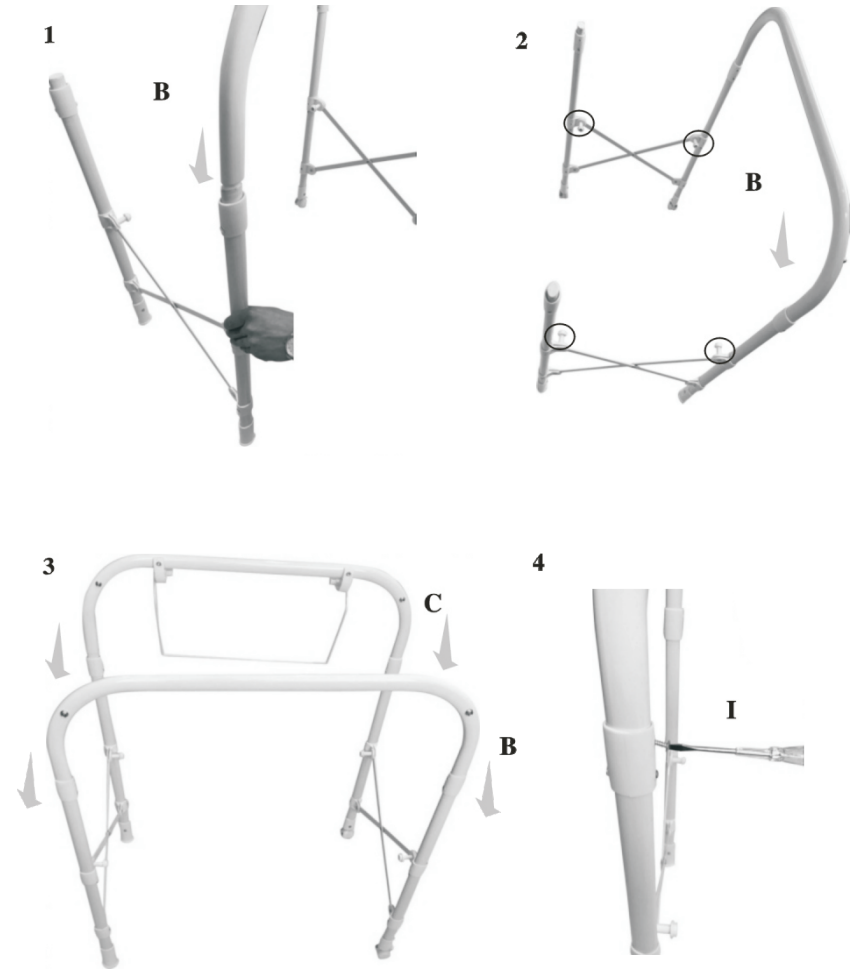
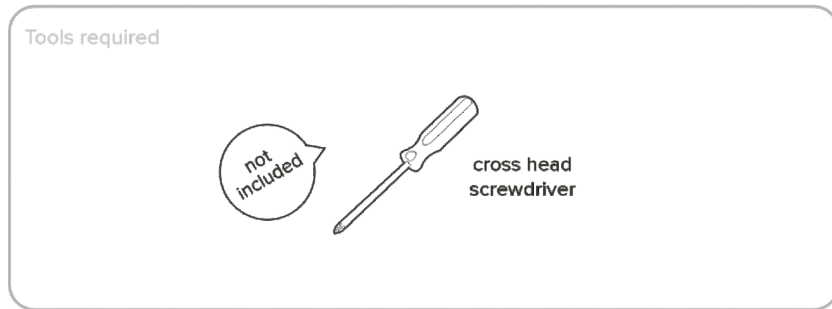
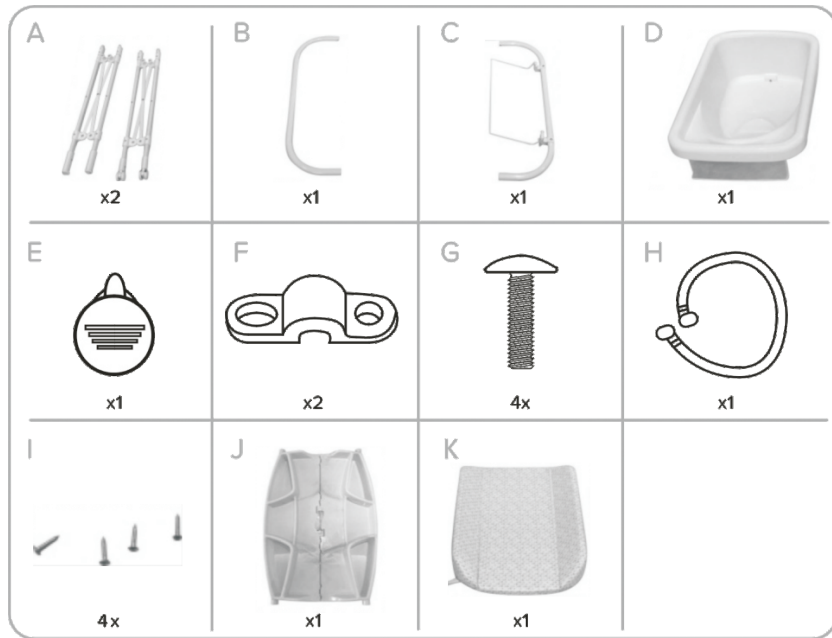
www.jikelbaby.com

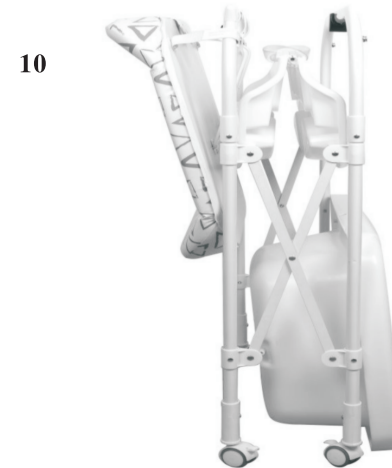
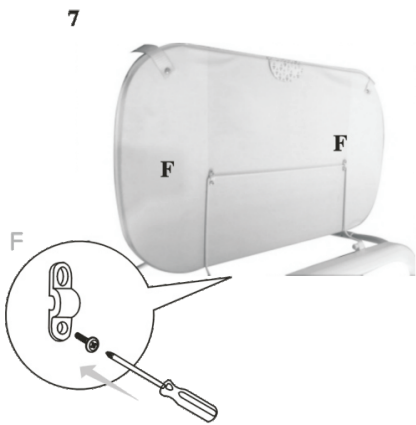
IMPORTANT

Retain for Future Reference & Read Carefully

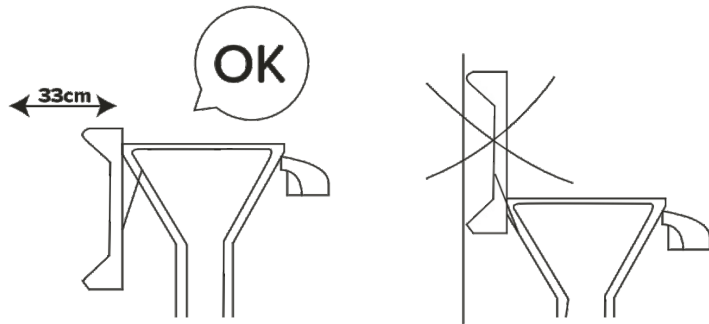
0+

Max 11kg



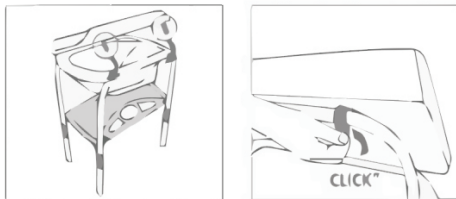


Assembly

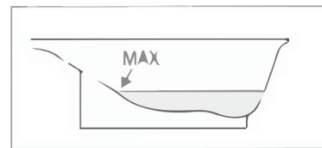


Locking the changing mat

Fold it down over the chassis, slot the 2 front fastening straps into the 2 lower supports underneath the chassis.



Maximum water Level



Warning:

Drowning can occur very quickly and in very shallow water ($\pm 2\text{cm}$), this product does not provide any extra safety against the danger of children drowning.

Care

- Do not leave the child unattended or unsupervised. The carer should remain in contact with the child.
- To avoid drowning, always keep child within arm's reach.
- Read these instructions carefully before use and keep for future reference.
- Ensure that all the locks are secured before use.
- Maximum weight capacity is 11 kgs.
- Please ensure the bathtub is installed on a level surface, to ensure the product does not move.
- Do not use if any part is missing or broken.
- All the joints should be tightened correctly and checked regularly.
- Regularly inspect the fitting accessories.
- Only use the supplied changing mat and use the buckle to hold the mat in position.
- Never leave baby in care of children
- Check the water for temperature.
- Beware of the risk of open fires and other sources of strong heat, such as electric bar fires, gas fires, etc. in the near vicinity of the bathtub.
- Keep drainage hose out of reach of children
- This product complies with European Union standards of BS EN12221:2008 + A1:2013.

Maintenance

Assembly fittings should always be tightened properly and must be checked regularly and retightened, as necessary. If any part is missing or broken, do not use the product until the correct spare part has been obtained from the distributor.

Cleaning

To clean the changer, wipe it using a mild detergent and water. Never clean with abrasive, ammonia, bleach, or alcohol-based cleaners. The cleaner must be thoroughly dried before use or storage.