

## Multifunctional Comfort 3

### USING INSTRUCTION

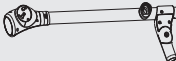
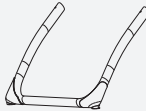


IMPORTANT! KEEP FOR FUTURE REFERENCE. Please read the instruction of high chair carefully before using and keep it for future reference. It may cause injury to the infant if operation of chair doesn't according to the instruction!



## Contents

- 1 Product List.....1
- 2 Assembly.....2~5
- 3 Use Instructions.....5-12
- 4 Notice..... 13
- 5 Cleaning and Maintenance..... 14

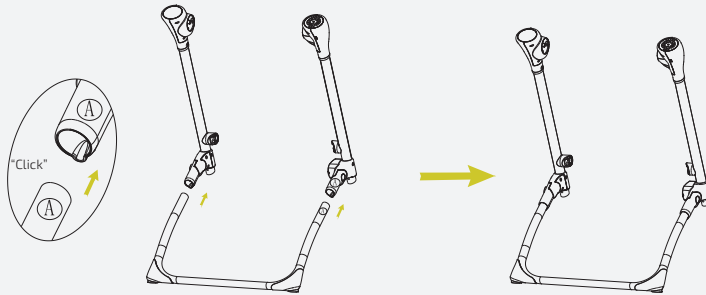
## 1 Product List

Photo	Name	Quantity	Photo	Name	Quantity
	Main model	1		Fixed sets of l	1
	Assist model	1		Dinner Plate	1
	Front Foot Tube	1		Toy Bar	1
	Hind feet tube	1		Footrest base	1
	Left lifting arm tube	1		Adapter	1
	Right lifting arm tube	1	Instruction Manual		1
	Seat	1			

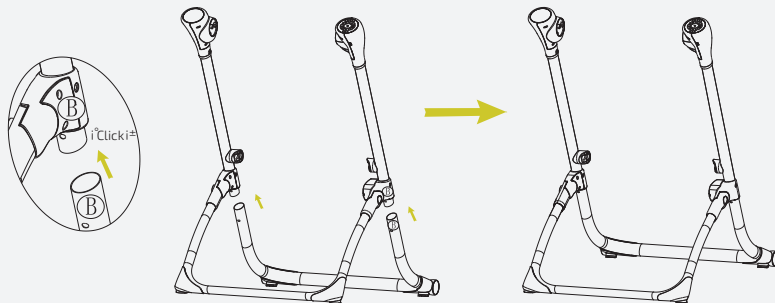
## II Instructions for assembling the parts

**WARNING** It should be installed by adult.

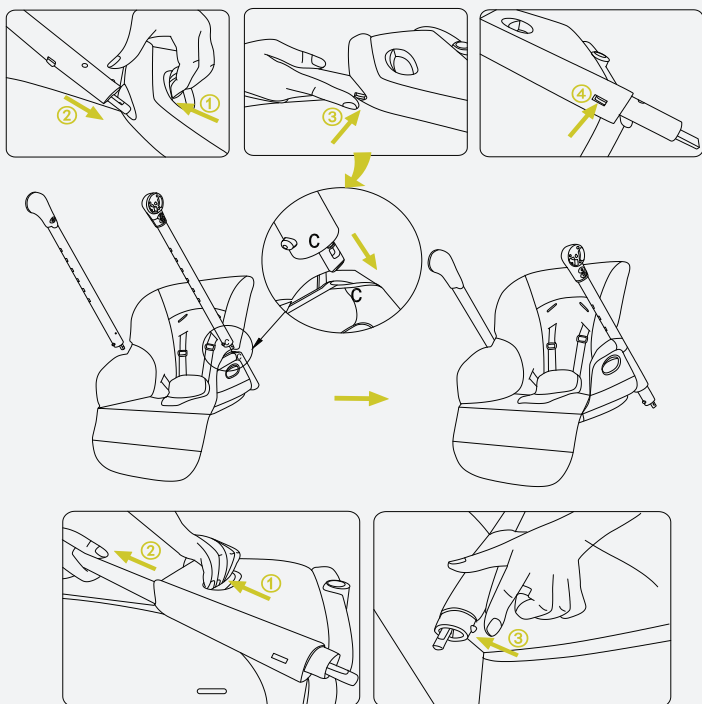
1. Insert the front foot tube into the corresponding hole in the lower joint, A to A, until you hear the "click" sound. As below picture.



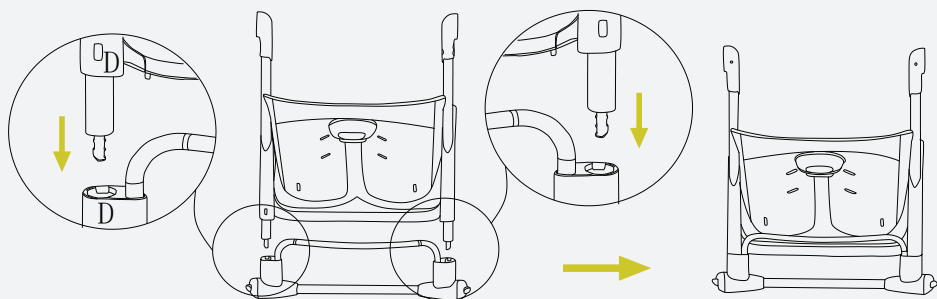
2. Insert the rear foot tube into the corresponding hole in the lower joint, B to B, until you hear the "click" sound. As below picture.



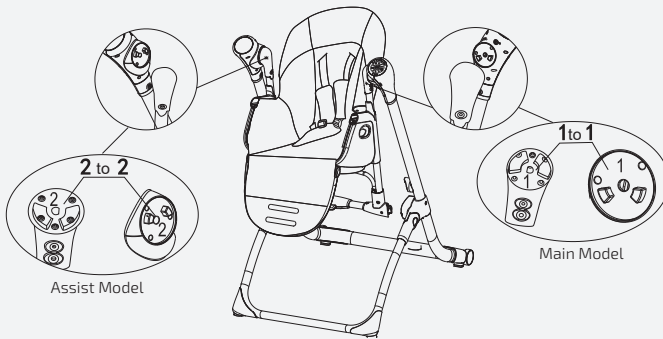
3. Insert the left and right arms into the seat group on both sides, C to C, As below picture



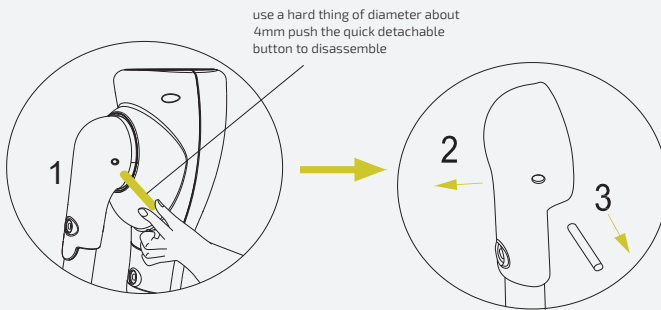
4 . Make the arm align to the fixed hole, D to D, fixed in the designated position. As below picture



5. Assemble the left and right arms as below picture

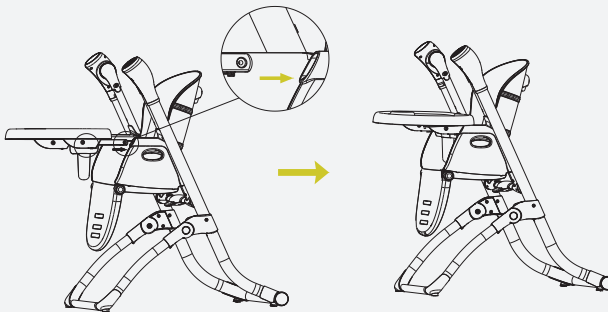


6. Disassemble the left and right arms as below picture.



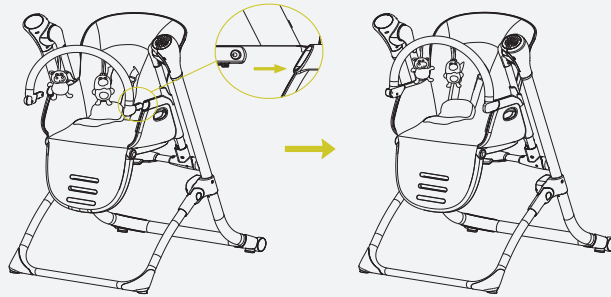
7. Install the dinner plate on the seat group in the direction of the arrow. As shown below.

**Notice: Use the high chair with dinner plate**

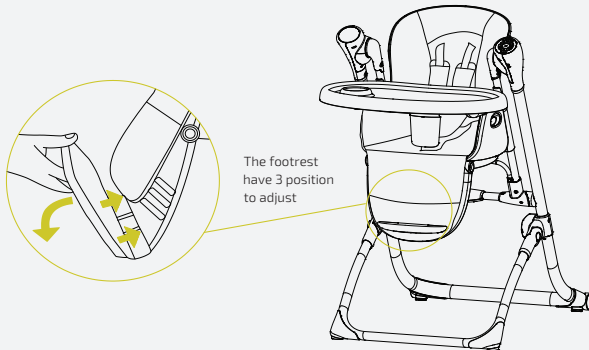


8. Install the toy bar on the seat group in the direction of the arrow ,As shown below.

**Notice: Use the swing with toys bar.**

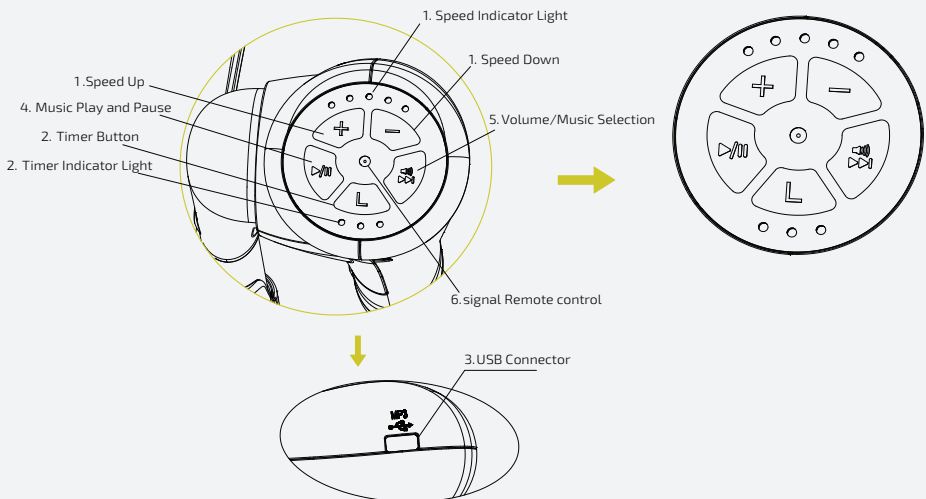


9. Put small pedal on the pedal port and then press down, installed in place. as the picture shows.

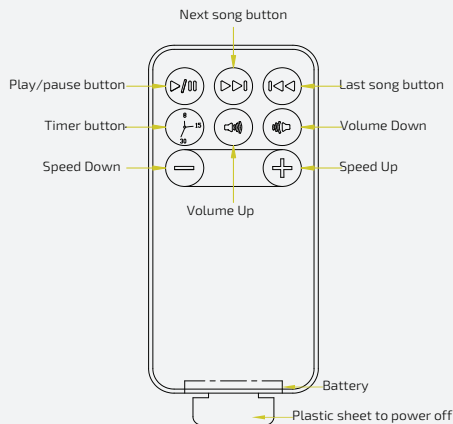


### III. Function Use

#### 1. Function description of Control panel:



- 1) There are five gears(five lights) to adjust the swing speed, divided by "+" and "-" two keys to choose the swing speed (as shown in the figure).
- 2) There are three types of time setting. Press the button once, light will be on for 8 minutes. Press it second time, the light will be on for 15 minutes. Press it third time, the light will be on for 30 minutes. When setting time is reached, all functions will stop. If time setting function is not used, all using function will start working until power is off.
- 3) USB connector, can access USB and play USB's songs according to functional operation of the fourth and fifth.
- 4) Play/pause button. Press the button once to start playing music. Press it second time to stop playing music. The button has the same function under U-disk and APP mode.
- 5) Volume/next song button. After pressing music play button, press this button to play next song( the swing has 12 8 chord songs). Press " volume/next song" button for a while to adjust volume. After concerning volume, release your hand. Use the same way to adjust volume under U -disk and APP mode.
- 6) Remote control instructions:

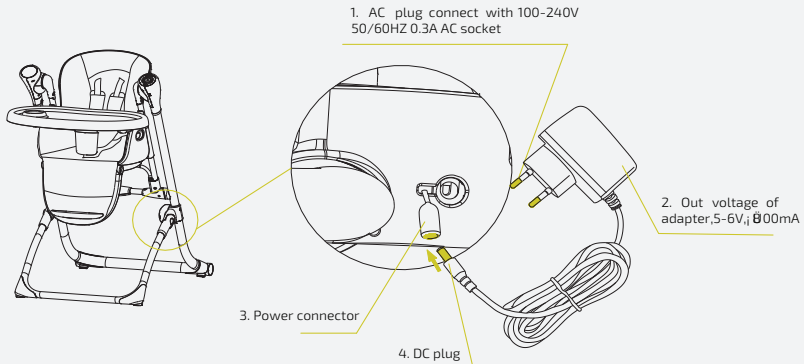


**Using instruction:**

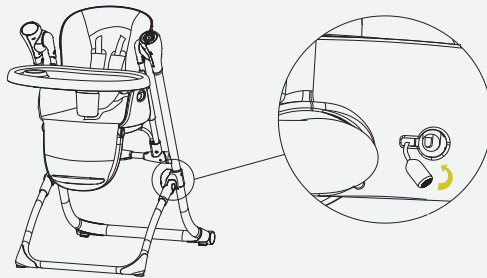
1. Swing Function: 5 types of swing speed( 5 indicator light) on speed adjust button. Press  $\uparrow$  for speed up,  $\downarrow$  for speed down.
2. Timer Setting: three types of time setting. Press the button once, light will be on for 8 minutes. Press it second time, the light will be on for 15 minutes. Press it third time, the light will be on for 30 minutes. When setting time is reached, all functions will stop. If time setting function is not used, all using function will start working until power is off.
3. Play/pause button: Press the button once to start playing music. Press it second time to stop playing music.
4. Text song button: Press it to next song.
5. Last song button: press it to last song.
6. Battery: Remove the battery compartment and replace the battery.

**2. Adapter:** if this accessory is available, please operate it as following ways.

- 1) As below picture shows, insert DC plug of adapter to DC receiver of main model. Insert the AC plug into 100 -240V 50/60Hz 0.3A AC socket.

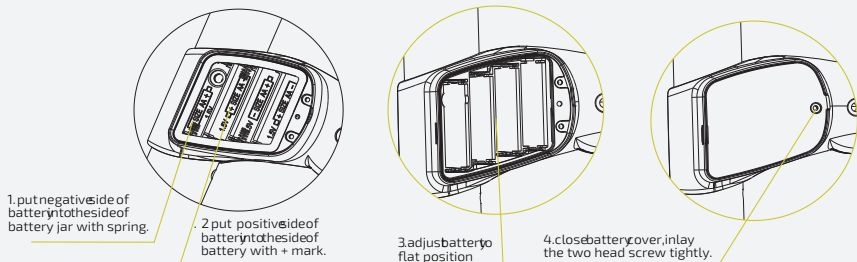


2 When using the battery, insert the DC connector into the battery compartment hole, and unplug the power connector when not in use for a long time to save power. As shown below.



3. This product can use 4pcs No.5 batteries on the product for power supply.

1 As shown below, the battery installation method: use a screwdriver to remove the screws on battery cover, and then remove the battery cover, put the battery in the battery slot with correct polarity, and then cover the battery cover and fixed. Remove the battery according to above steps.



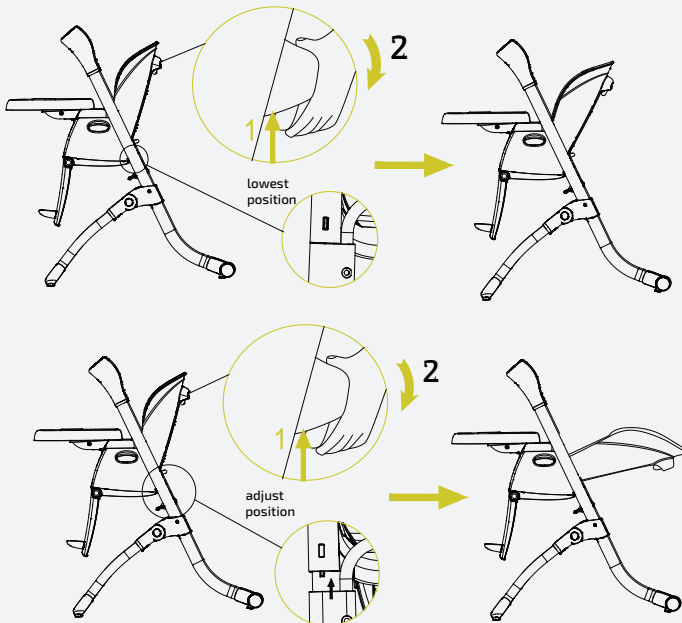
**WARNING!**



- Non-rechargeable batteries can't be charged;
- Rechargeable batteries can only be charged under adult supervision.
- Rechargeable battery should be taken out of the toys before charging.
- Different types of batteries or old and new batteries cannot be mixed.
- The batteries should be placed in the correct polarity.
- Exhausted batteries need to be removed from the infant swing.
- Power supply terminal must not short -circuit.
- The infant swing shall only be used with the recommended transformer. Input voltage of adapter is 100 -240V-50/60Hz 0.3A MAX Output voltage 5.8 -6V 800mA-1A.
- When using the adapter, keep out of reach of children.
- Adapter used with the infant swing are to be regularly examined for damage to the cord, plug, enclosure and other parts, and in the event of such damages, it shall not be used.
- Please unplug the power and remove the battery when it is not in use for a long time. Do not give the battery and the adapter to the baby.

4. When the seat and the arm is in lock state, the backrest only can be adjusted 2 position, when adjust the height of chair seat to the second or above the second position, the backrest can be adjusted to any sitting position until lying.

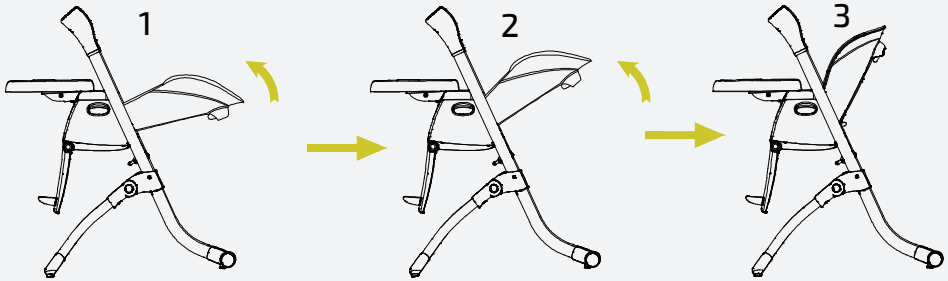
**WARNING: When adjusting the function, please let baby leave the chair first.**



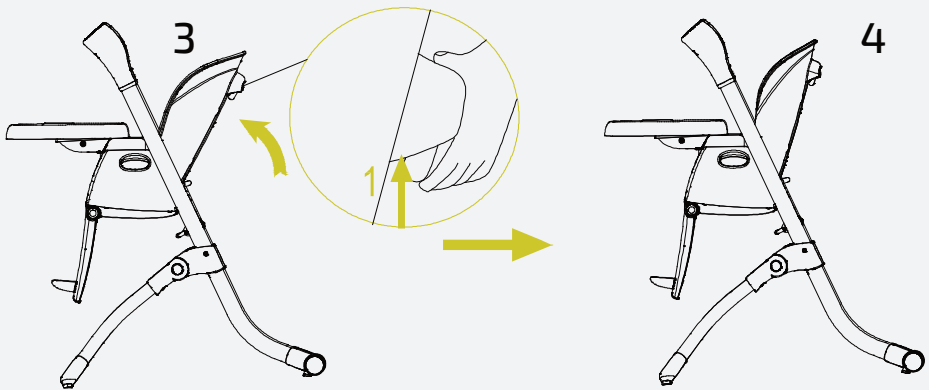
5. Introductions for backrest adjustment function:

- 1) Backrest adjusted from the first position to the second or third position, just push up the

backrest by hand, no need to operate the adjustment button, as following picture, the first, the second and the third position.



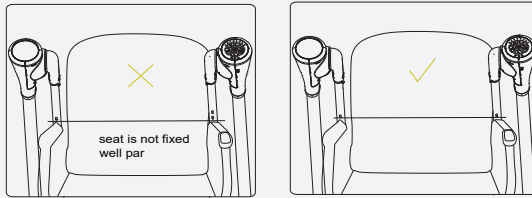
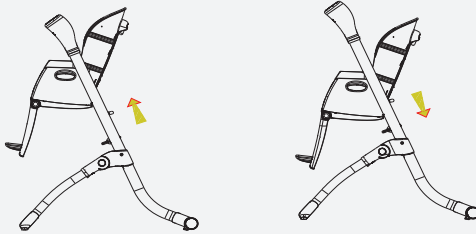
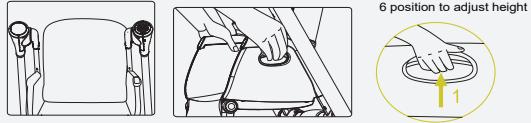
2) Backrest adjusted from the third position to fourth position, it must operate the adjustment button, as following picture showed.



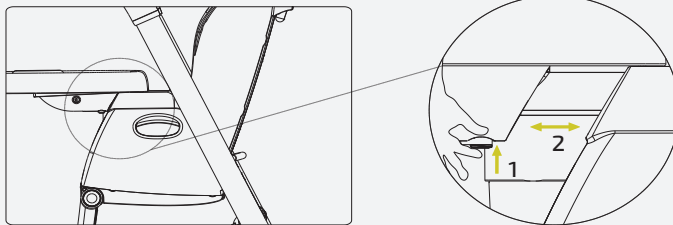
6. As shown in the figure, press the adjustment button on both sides, there are 6 different height for adjust, when you want to adjust the height, Your hands lift the seat in balance, keep both sides of the seat at the same height, until you hear "click" sound.

Warning! Seat adjustment button must be bounced back, if you find any side of the seat is not fixed, loose or not work.

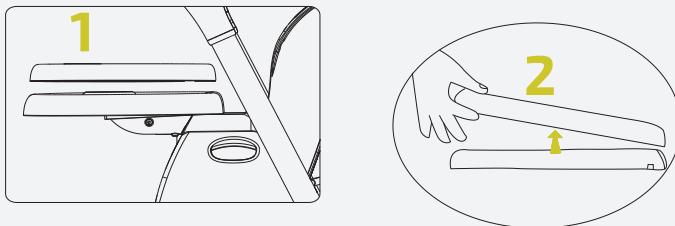
please fix it before use. Both sides of the seat must be fixed, keep the seat in the designated height, otherwise there will be d angerous!



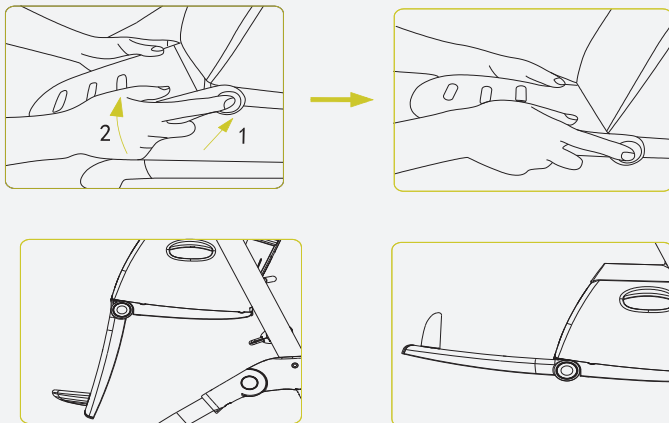
7. Activity tray can be adjusted to 3 position, as shown below.



8. Clean the tray, as shown below.



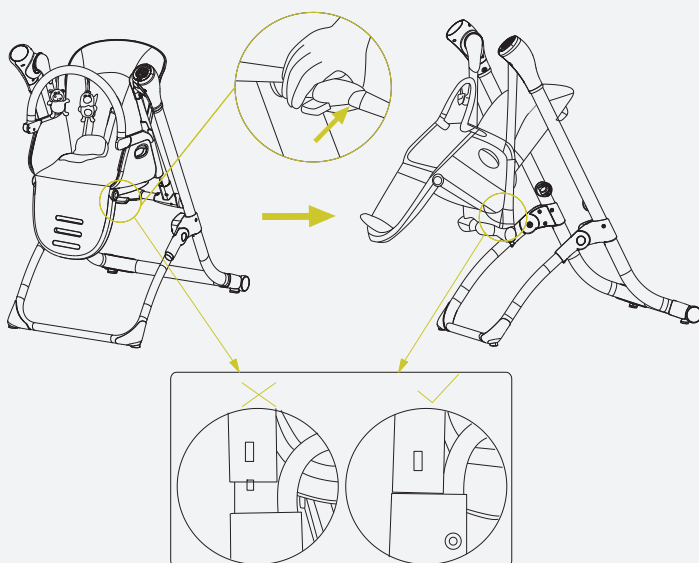
9. As shown, keep your hands on both sides of the footrest button at the same time and press down to adjust up and down(4 sections).



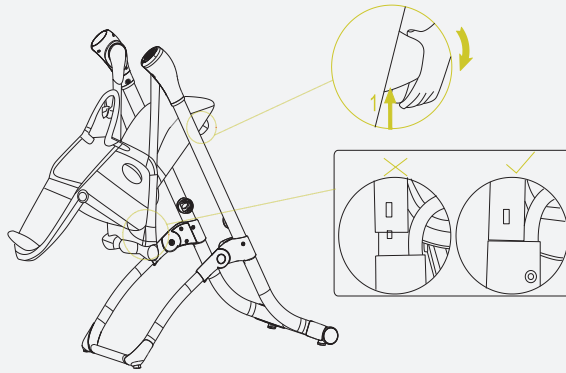
10. While the seat is lowest position, high chair can be converted to swing. Same step for swing convert to high chair. As shown below .

**In swing status, the seat height can't be adjusted.**

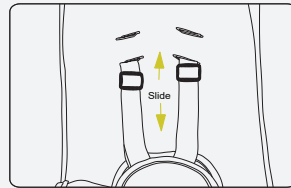
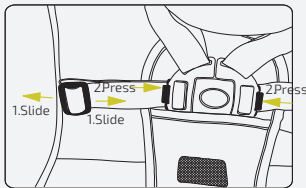
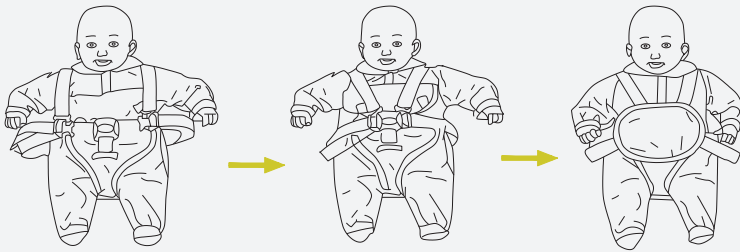
**WARNING!** The swing rocking function must be closed when swing convert into high chair, or it will affect the lifespan of motor. The seat height can't be adjusted up and down once it is in swing status.



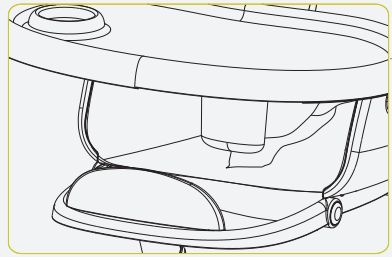
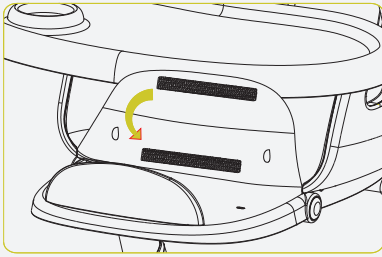
11. In swing status, backrest can be adjusted to 2 positions.



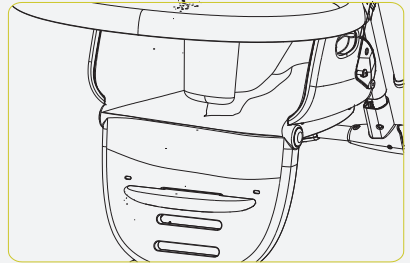
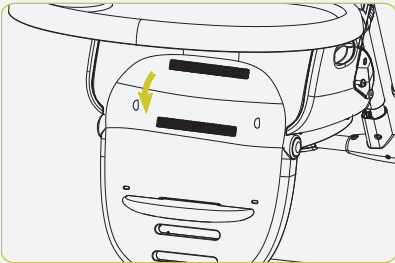
12. As following picture, place the baby into seat pad, lock the safety button, and then cover the protective bag. The length of the safety harness can be adjusted by shoulder and waist button. As following picture, 5 point safety harness will protect your baby secure and comfortable.



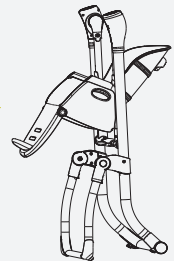
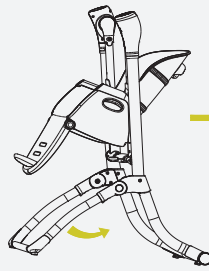
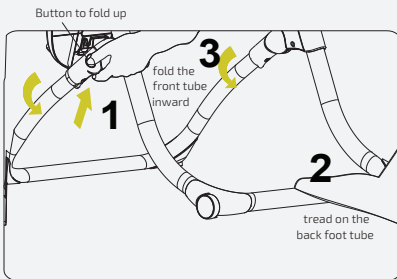
13. When the footrest is in flat position, remove the elastic band fixed on the footrest and then the footrest is folded and the nose velcro sticks to fix. When put down the cloth of footrest, then make elastic band through the foot rest, and then fasten the elastic band on the pedal pin. As shown below.



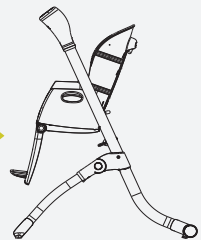
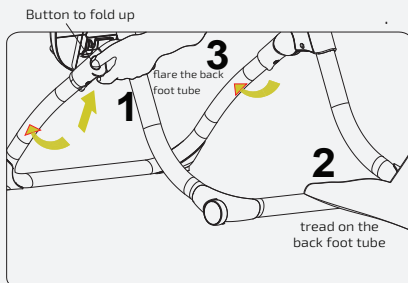
14. Install the first position of the footrest, remove the elastic band fixed on the footrest and then the footrest is folded and the nose velcro sticks to fix. When put down the cloth of footrest, then make elastic band through the foot rest, and then fasten the elastic band on the pedal pin. As shown below.



15. Fold the chair, press the left and right side's button; and tread on the back foot tube, then fold the front tube inward. As the picture shows.



16. Unfold the chair, press the left and right side's button, and tread on the back foot tube, then flare the back foot tube. As the picture shows



## WARNING!

When folding the chair or adjusting the chair function, you must let the baby leave the chair and prohibit swing.

### IV Notice



## WARNING!

1. Always use this product with the seat belt!
2. To ensure that any tape is properly assembled.
3. Do not use the dining chair unless all parts are properly installed and adjusted.
4. Make sure that all locking devices are in use before using the multifunction dining chair.
5. Do not leave unattended children alone in the product!
6. The age to use the dining chair is 6-36 months.
7. The range of use swing age 0-6 months or the weight is within 9KG.
8. Children who use the high chair under 0-6 months or less 9KG are prohibit.
9. Do not use the toy stick to lift or move the chair.
- 10.. When the child is in this product, do not carry out functional adjustment or lift, move this product!
- 11.This product is strictly prohibited at high places (such as: table, table, stairs or other high ground from the ground), to prevent the risk of falling.
12. It is very dangerous to put this product on a non-flat surface!
- 13.Note the risk of suffocation: Please do not use product above soft objects, to prevent chipping caused by suffocation (such as bed, sofa, etc.)
14. Please do not let the children stand in the multifunctional dining chair. In order to prevent falling and haunted by a seat belt or stuck in the harness and other accidents occurred.
15. Do not let children take this product as a toy!
16. Make sure that the child leaves the product before folding the product!
17. This product can be used for a long time.
18. Please do not use this product if any parts are damaged or missing. Do not use substitutes at will, except by replacement parts approved by the manufacturer.
19. Do not use this chair until all parts are properly assembled.
20. Keep away from fire and other strong heat sources. (Such as electric heaters near the high chair, gas heaters, etc.)
21. Do not hang anything on the chair to prevent the stability of the chair.
- 22.When this product is powered on or when the power switch is pressed, wait for 3-5 seconds till other function keys start working.

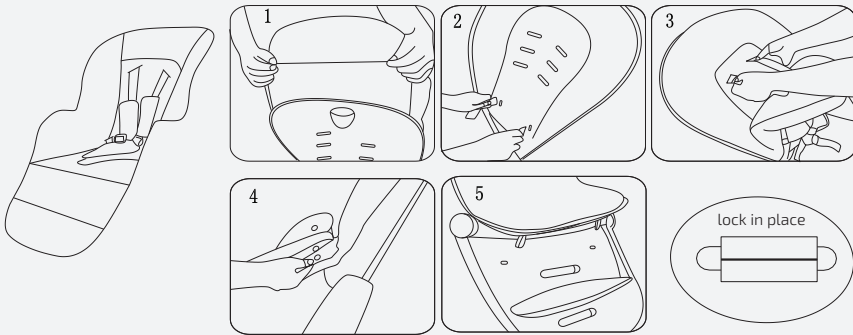
**WARNING!** Never machine-wash, bleach, dehydrate the products.

### V Care and clean

1. Seat pad: Remove from frame. Hand wash with cold water, gentle cycle.
2. Dining chair cushions removable, easy to clean.

3. Put the cloth cover on the back of the back seat, put the seat belt which is at the bottom of the seat, at the bottom of back seat and at the backrest into the corresponding slot.

To be stuck, make the buckle on the cloth buckle up the buckle on the seat, make the elastic cord through the foot pedal, and then make the elastic cord fixed on the foot pedal.



## 2. Basic maintenance

No.	Problems that may occur	Solution
1	Suddenly stop when swinging and playing music	Batteries are not be assembled correctly and electricity is not enough
2	No function works after starting	Check whether polarity of batteries are in correct position
3	Not use in long time	Take out the batteries
4	Shaking seriously	Please check whether the closing joint is in place
5	Indicator light becomes weak	electricity is not enough